

Model CB Series

DUAL FACE PLATE MACHINERY FOR LINING BABBITT BEARINGS



Standard Features

- Variable Speed Motor/Drive Package
- Main Operator's Console with HMI display
- Machine Base
- Pneumatic Assembly
- Centrifugal Casting "Works" Manual
- Water Cooling
- Pouring Funnel
- Clamping Assembly
- Machine Water Guard
- 12 Month Equipment Warranty



Centrifugal Casting Machine Company, Inc.

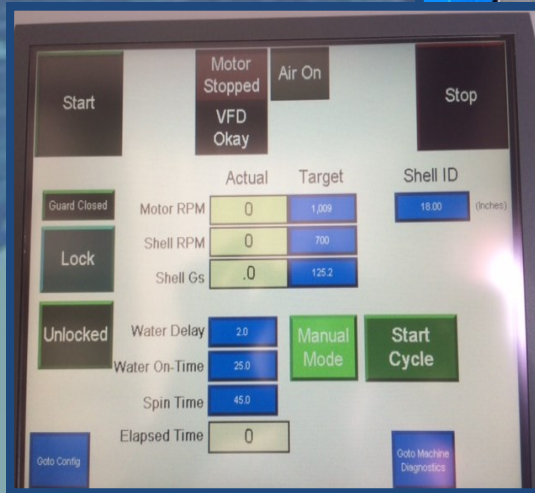
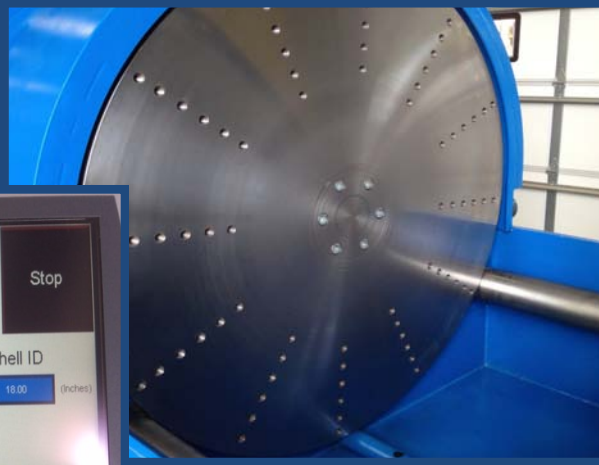
The world leader in centrifugal casting and permanent mold technology

www.centrifugalcastingmachineco.com

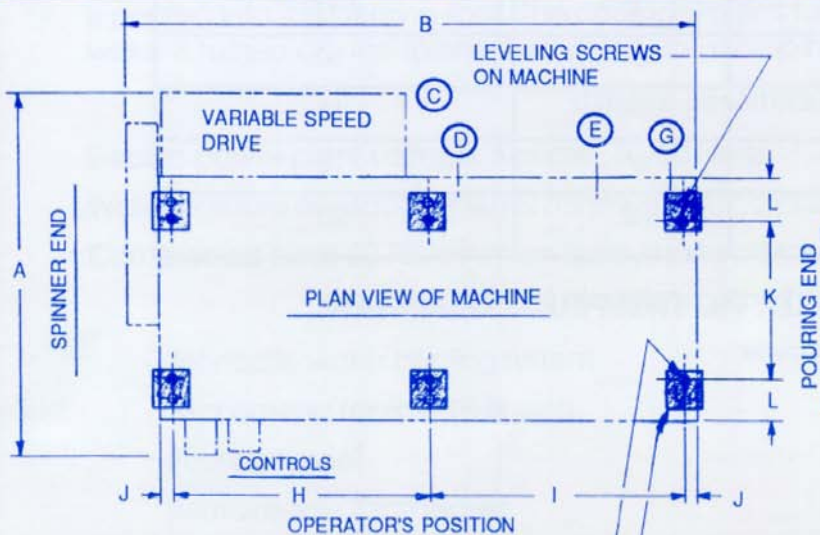


Model CB Series Standard Models

| Machine Model | Max. Shell Diameter | Max. Shell Length | Usual Drive Horse-Power | Max. Load Supported | Max. Opening Between Face Plates | Max. Spin RPM |
|---------------|---------------------|-------------------|-------------------------|----------------------|----------------------------------|---------------|
| CB-5-5-WC | 5" (127 mm) | 5" (127 mm) | 2 HP | Balanced Both Ends | 7" (178 mm) | 1500 |
| CB-16-16-WC | 16" (406 mm) | 16" (406 mm) | 7 1/2 HP | Concentric Both Ends | 18" (457 mm) | 1400 |
| CB-24-24-WC | 24" (610 mm) | 24" (610 mm) | 15 HP | 2000 Lbs (907Kgs) | 27" (659 mm) | 1400 |
| CB-30-30-WC | 30" (762 mm) | 30" (762 mm) | 20 HP | 2000 Lbs (907 kgs) | 33" (838 mm) | 1000 |
| CB-36-36-WC | 36" (914 mm) | 36" (914 mm) | 20 HP | 3000 Lbs (1361 Kgs) | 41" (1041 mm) | 800 |
| CB-45-45-WC | 45" (1143 mm) | 45" (1143 mm) | 40 HP | 4000 Lbs (1814 Kgs) | 46" (1168 mm) | 500 |



| MODEL | CLEAR DIMN. | | COND SIZE | | | | | LINE SIZES (PIPE) | | | | | ANCHOR BOLT SPACING | | | | | ANCHOR BOLT | | FLOOR SPACE | AIR CFM | WATER GPM | CONN HP | CONN KW |
|----------|-------------|------|-----------|----|----|------|----|-------------------|---------|----|-----|----|---------------------|--------|---------|-------------|-------------|-------------|-------|-------------|---------|-----------|---------|---------|
| | A | B | C | D | E | F | G | H | I | J | K | L | M | N | WEIGHT | SEE E BELOW | SEE G BELOW | 3ø | | | | | | |
| CB-16-8 | 66' | 73' | 3/4" | 2' | 1' | 3/4" | 1' | 28' | 37' | 2' | 23' | 6' | 3/4" | 2-1/2" | 4400# | 34 sq. ft. | 5 | 20 | 5 | 3.75 | | | | |
| CB-16-16 | 66' | 81' | 3/4" | 2' | 1' | 3/4" | 1' | 30' | 43' | 2' | 23' | 6' | 3/4" | 2-1/2" | 5100# | 38 sq. ft. | 5 | 40 | 7-1/2 | 5.63 | | | | |
| CB-24-24 | 66' | 96' | 3/4" | 2' | 1' | 3/4" | 1' | 41' | 41' | 2' | 23' | 6' | 3/4" | 2-1/2" | 5560# | 44 sq. ft. | 5 | 65 | 10 | 7.5 | | | | |
| CB-30-30 | 77' | 104' | 3/4" | 2' | 1' | 3/4" | 1' | 44' | 44' | 2' | 32' | 8' | 1" | 3" | 7000# | 56 sq. ft. | 5 | 75 | 15 | 11.25 | | | | |
| CB-36-36 | 77' | 110' | 3/4" | 2' | 1' | 3/4" | 1' | 43-1/2" | 52-1/2" | 2' | 32' | 8' | 1" | 3" | 8320# | 59 sq. ft. | 5 | 90 | 15 | 11.25 | | | | |
| CB-45-45 | 86' | 120' | 1" | 2' | 1' | 3/4" | 1' | 48' | 57' | 2' | 41' | 8' | 1-1/4" | 3" | 10,000# | 72 sq. ft. | 5 | 110 | 20 | 15.0 | | | | |



6 - "M" DIA. ANCHOR BOLTS X "N" ABOVE FLOOR
 6 - 6" X 6" X 3/4" THICK PLATES BY CUSTOMER.
 TOP OF PLATES TO BE FLUSH WITH TOP OF FLOOR.

The following utilities to be provided at the general area shown:

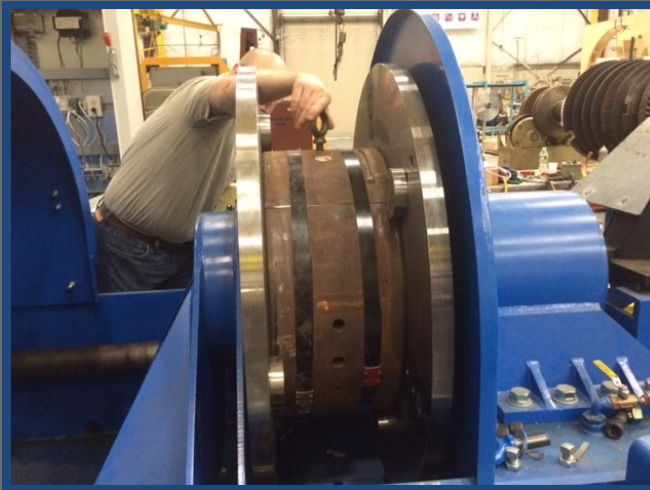
- (C) Three Phase Electrical Power
- (D) Water Drain Line
- (E) Compressed Air Line @ 80 to 125 psi (clamping)
- (G) Water Line @ 40 psi (mold cooling)

NOTES:

1. Machines to be installed on existing concrete floor (6" thick preferred) or equivalent, or on a steel deck.

The Model CB Horizontal Centrifugal Casting Machines are used to line bearing shells with white metal, or Babbitt. These machines clamp the bearing shell between two faceplates. The faceplates are accurately drilled with many holes to allow for a flexible range of bearing diameters. The shells are held between the two faces with a minimum of three centering bosses per side as well as pneumatic air pressure.

The CB and DFP series machines are driven with an AC variable speed motor/drive package and supplied with an HMI display. These machines offer a host of safety features.



Centrifugal Casting Machine Company, Inc.

The world leader in centrifugal casting and permanent mold technology

P.O. Box 947 Tulsa, Oklahoma 74101 United States of America
Telephone (918)835-7323 info@ccmctulsa.com

www.centrifugalcastingmachineco.com